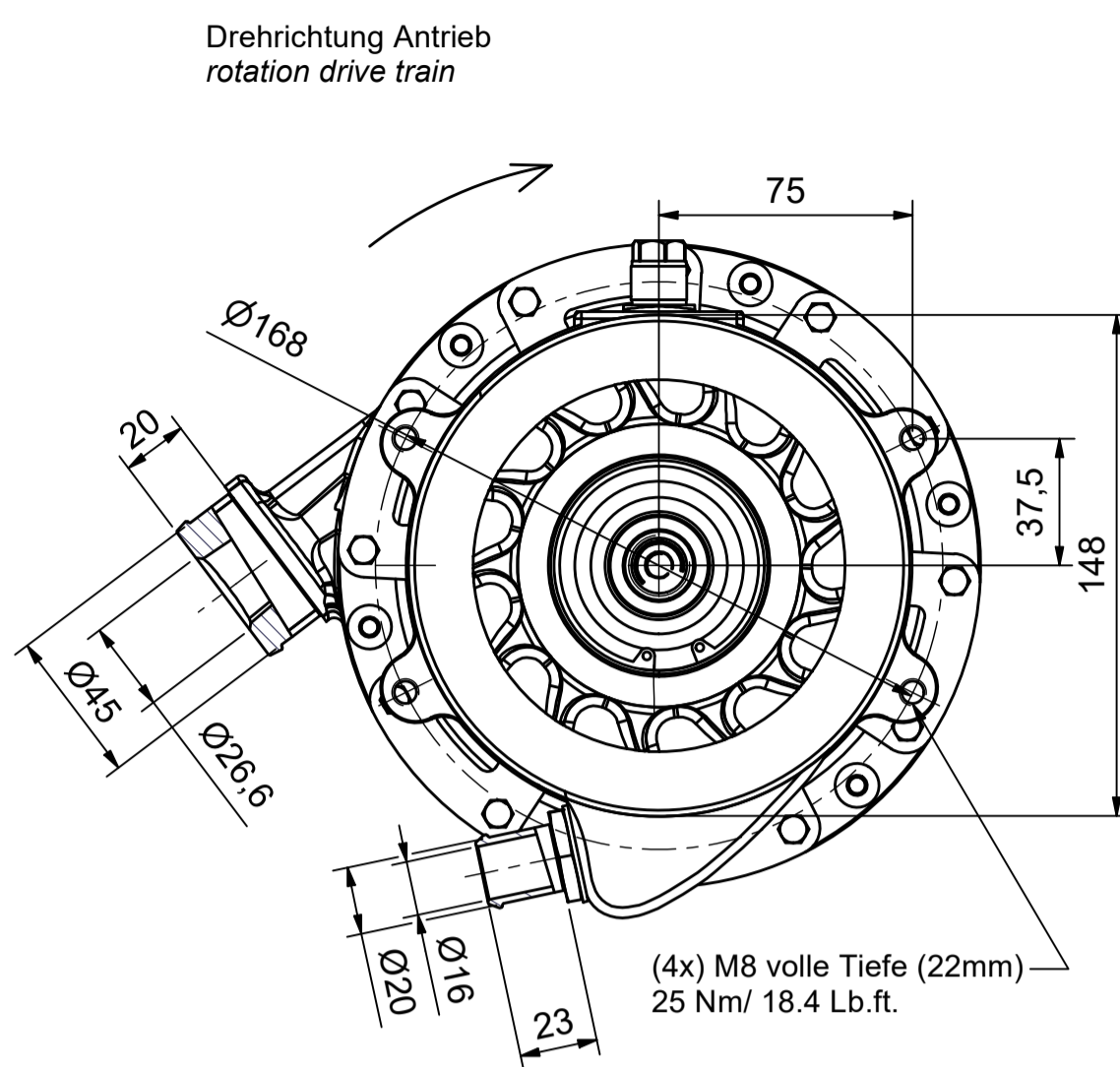
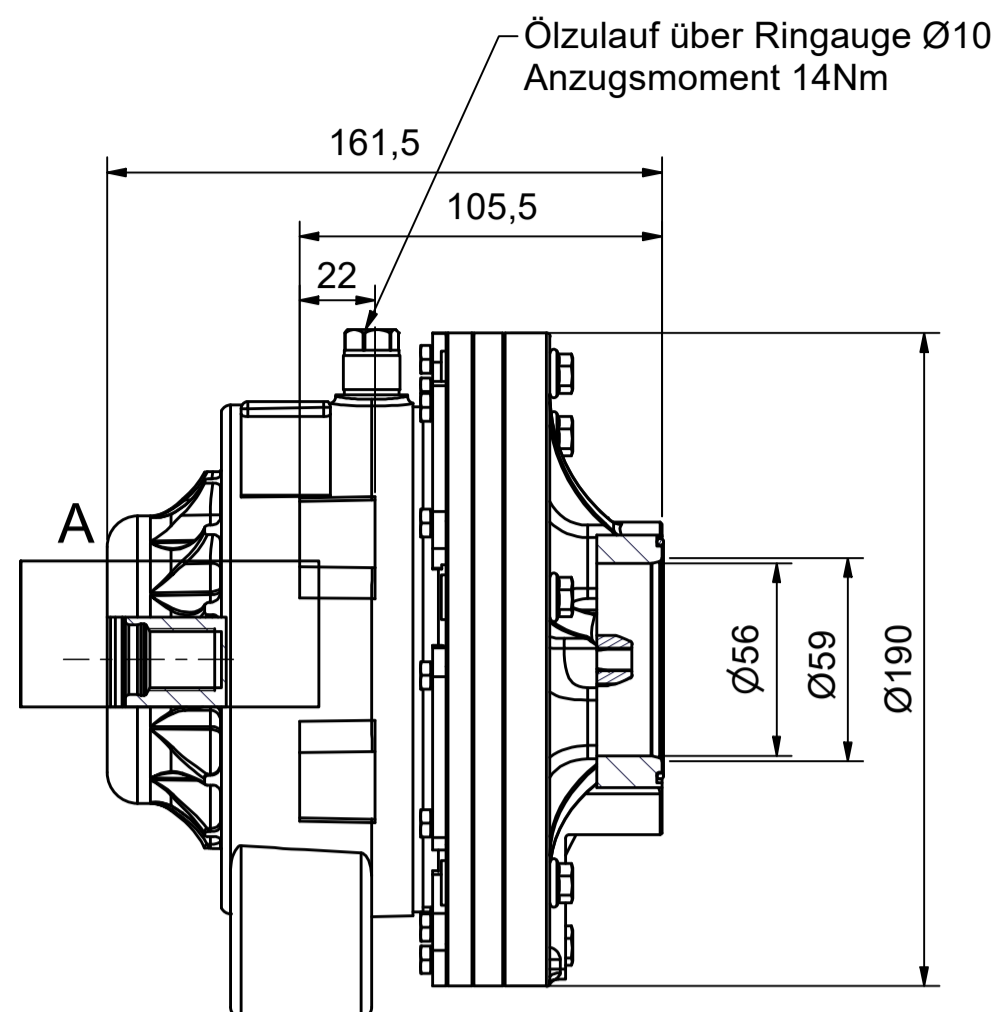


Kompressor T1-04

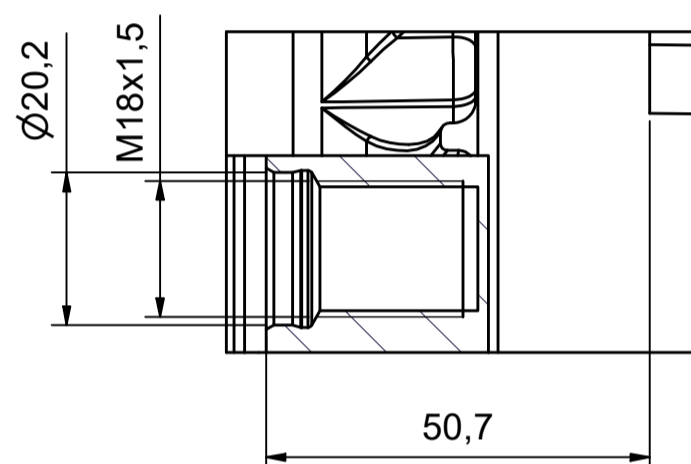
P300-00-86



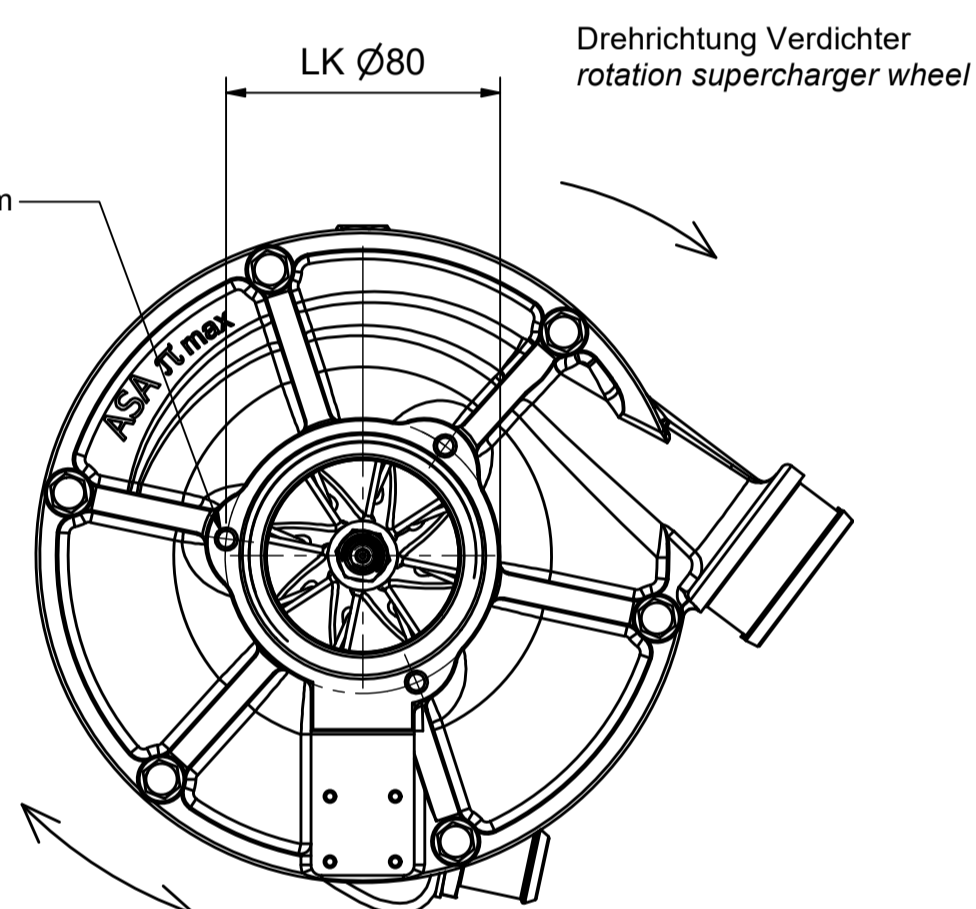
www.asa-kompressor.com



A (2:1) Antrieb drive



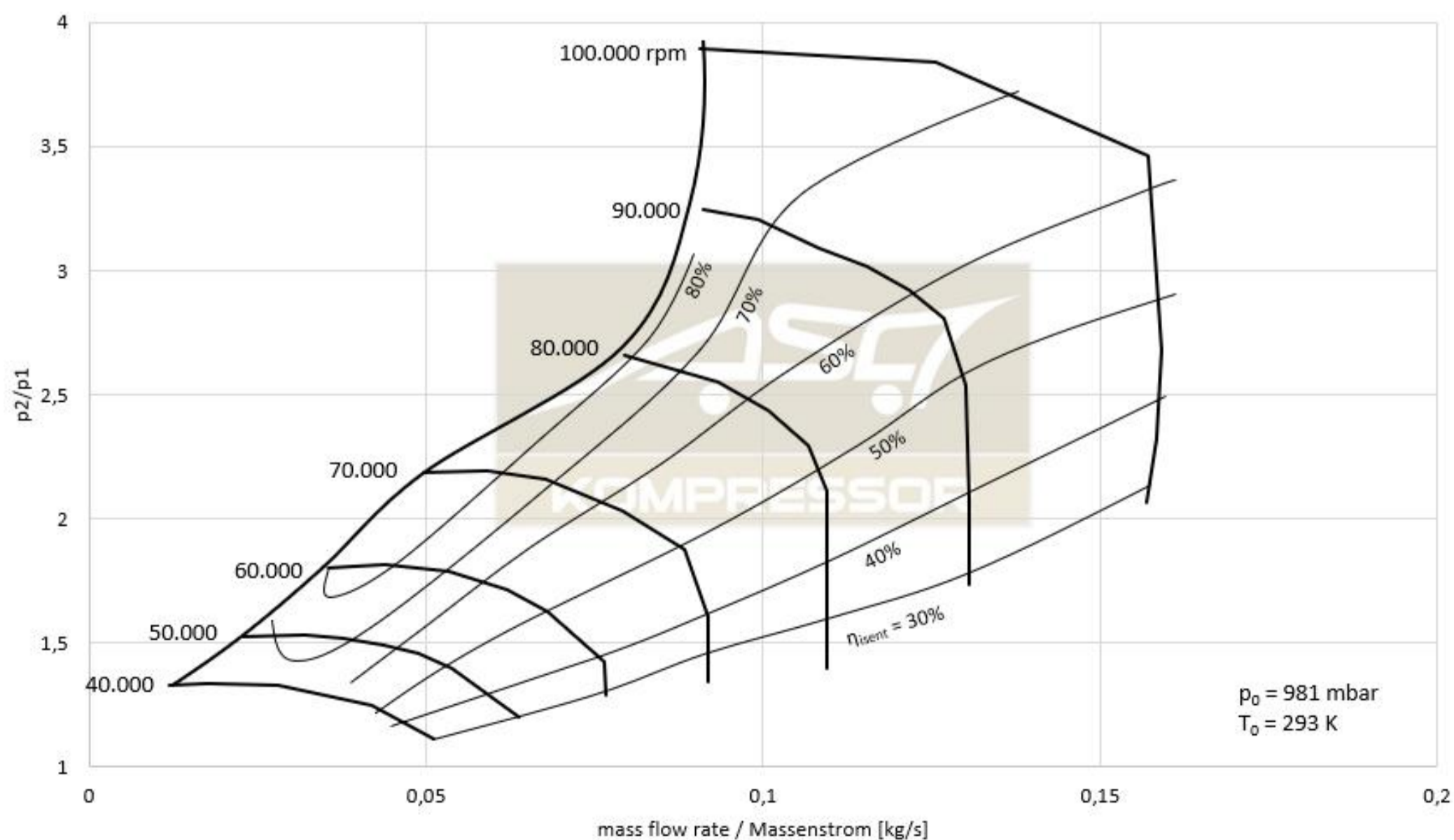
(3x) M6 nutzbare Gewindelänge 14mm
10 Nm/ 7.4 Lb.ft



Position Verdichteraustritt ist
frei um 360° drehbar
supercharger outlet can be rotated 360°

| | |
|--|-------------------------|
| Gewicht <i>weight</i> | 8 kg |
| Innere Übersetzung <i>inner gear ratio</i> | 1:15 |
| Ölvolumenstrom (übliche Motorenöle) <i>oil volume flow (usual engine oil)</i> | 1,2 - 1,6 l/min |
| Min./Max. Öleintrittstemperatur <i>min./max. oil inlet temperatur</i> | -40°C/105°C |
| Nenn Drehzahl <i>rated speed</i> | 100.000 1/min |
| Max. Luftmasse <i>max. air pressure flow</i> | 576 kg/h |
| Max. Druckverhältnis <i>max. pressure ratio</i> | 3,9 |
| Massenträgheitsmoment <i>mass moment of inertia</i> | 43000 kgmm ² |

Verdichterkennfeld flow chart T1-04



Datenblatt data sheet