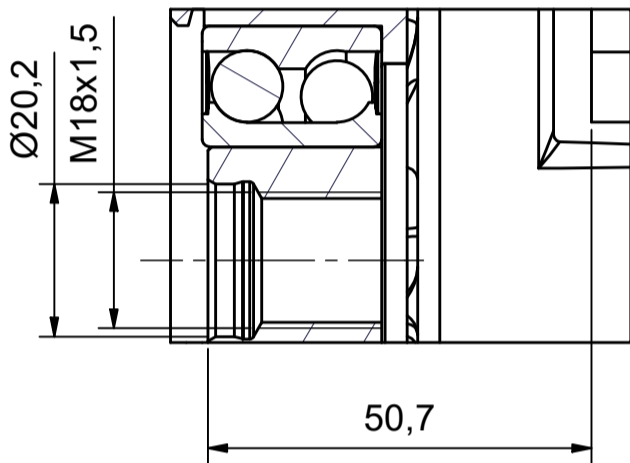
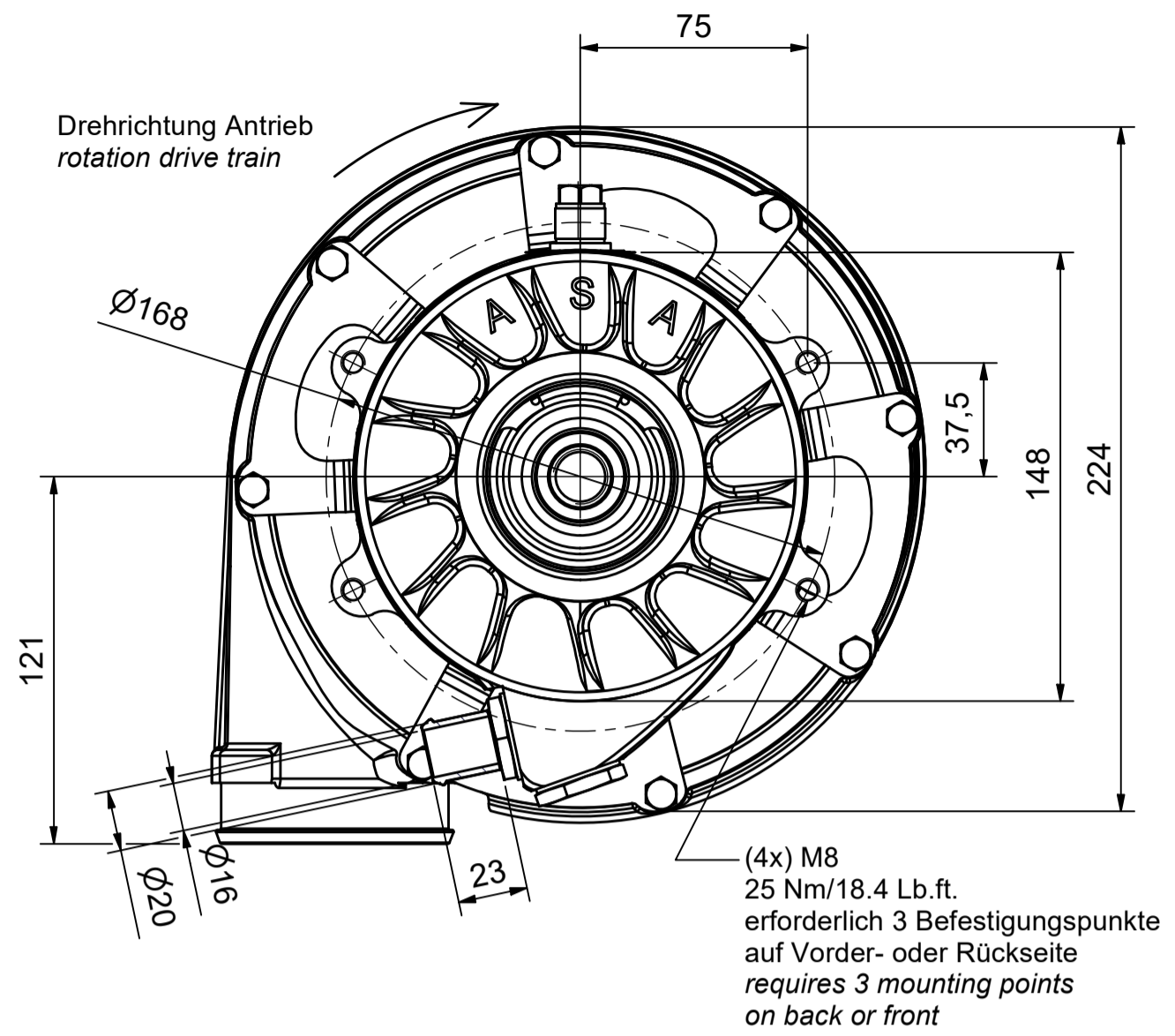
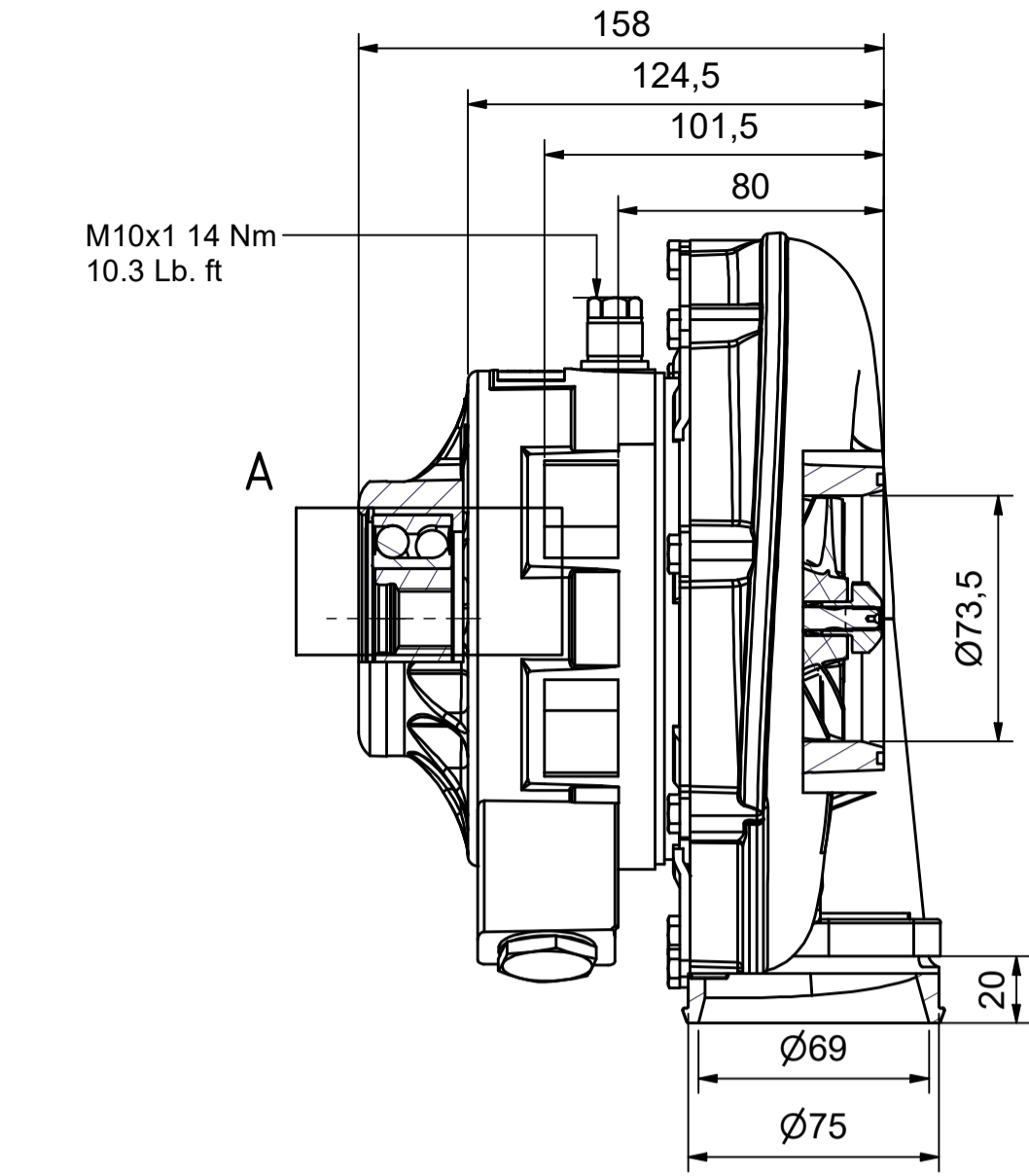
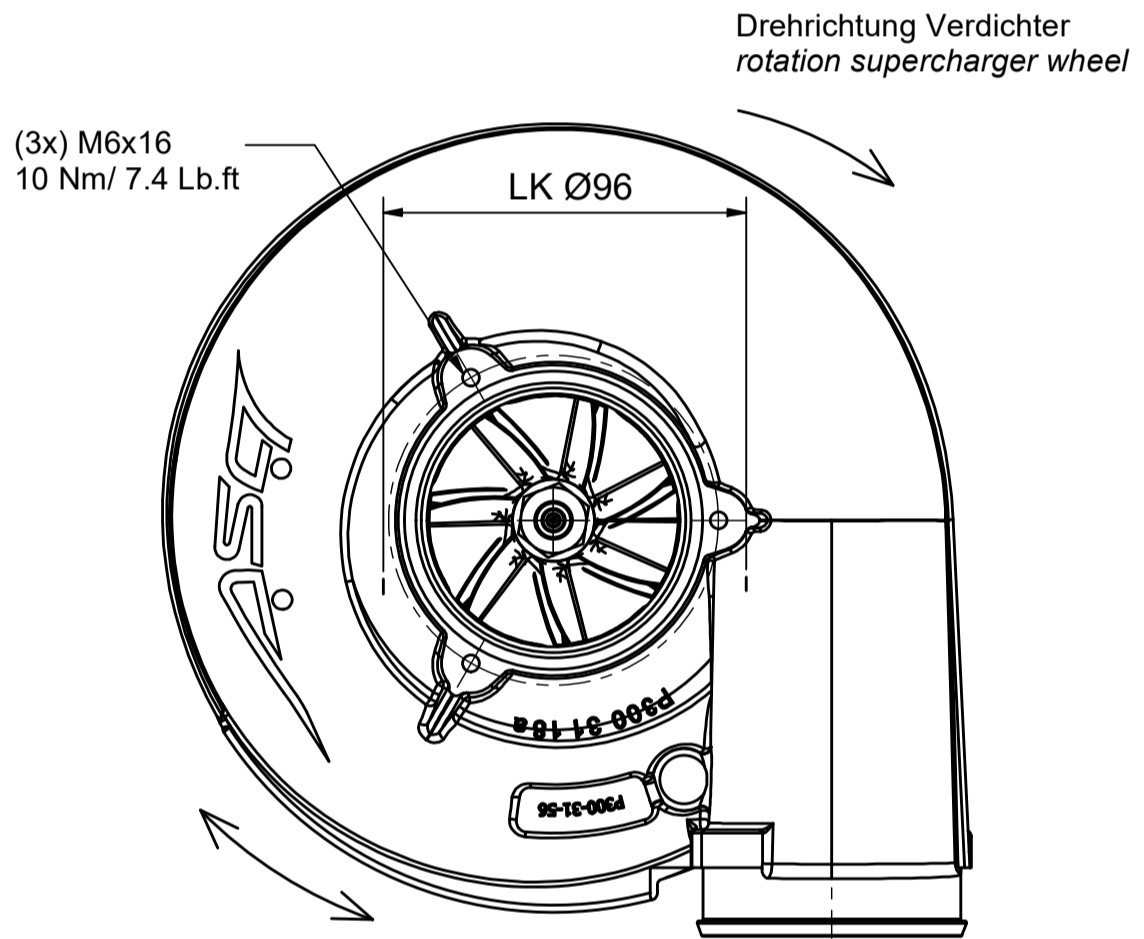


Kompressor T1-523 (hd)

T1-523: P300-00-60
T1-523hd: P300-00-84



A (2 : 1)
Antrieb
drive



	T1-523 (hd)
Gewicht weight	6,1 kg
Innere Übersetzung inner gear ratio	1:15
Ölvolumenstrom (übliche Motorenöle) oil volume flow-usual engine oil	1,2-1,6 l/min
Min./Max. Öleintrittstemperatur min./max. oil inlet temperature	-40°C/105 °C
Nenn Drehzahl (hd) rated speed	100.000 1/min (105.0001/min)
Max. Luftmasse (hd) max. air pressure flow	2100 kg/h (2100 kg/h)
Max. Druckverhältnis p2/p1 (hd) max. pressure ratio	3,1 (3,3)
Massenträgheitsmoment mass moment of inertia	39600 kgmm ²

Verdichterkennfeld flow chart T1-523(hd)

