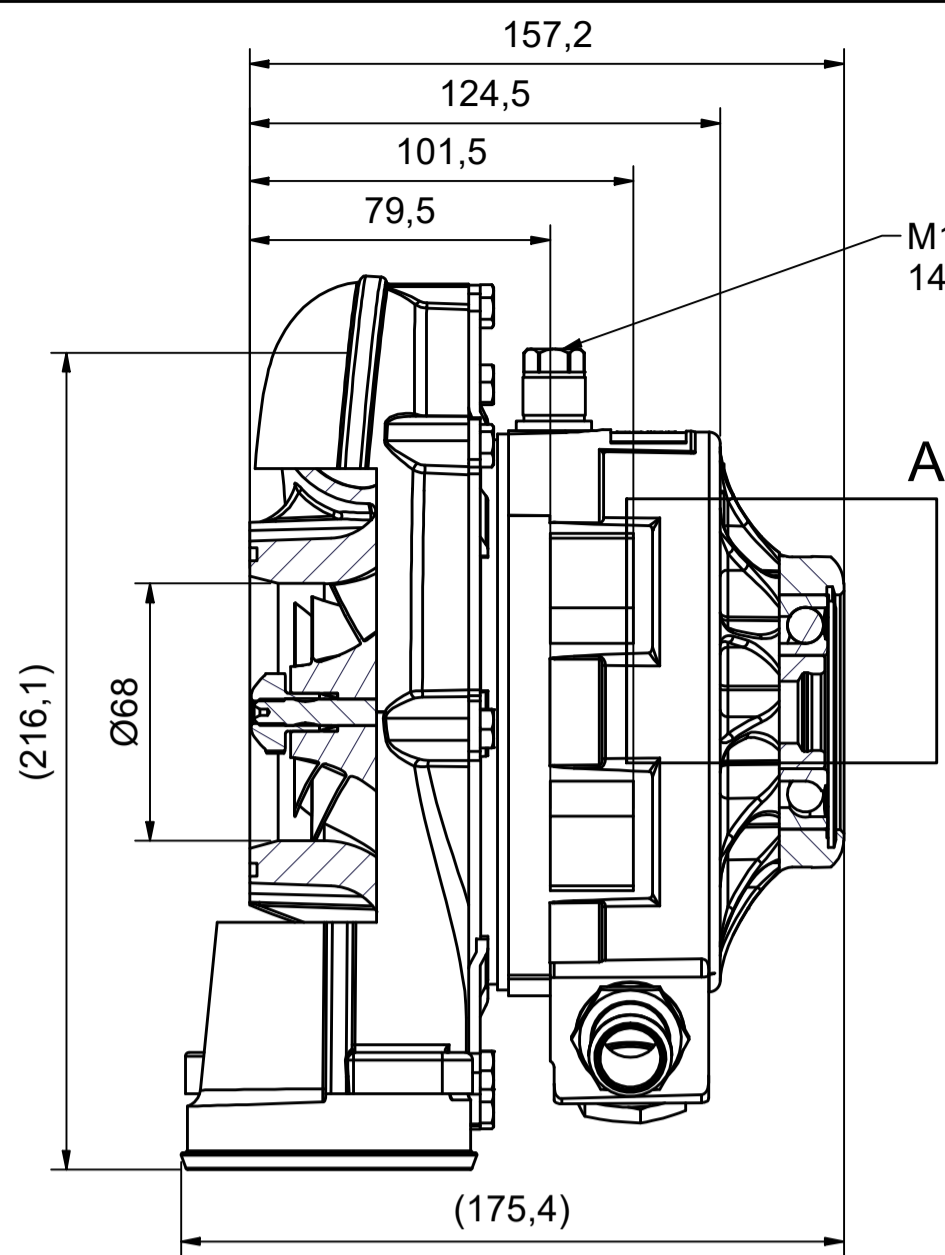
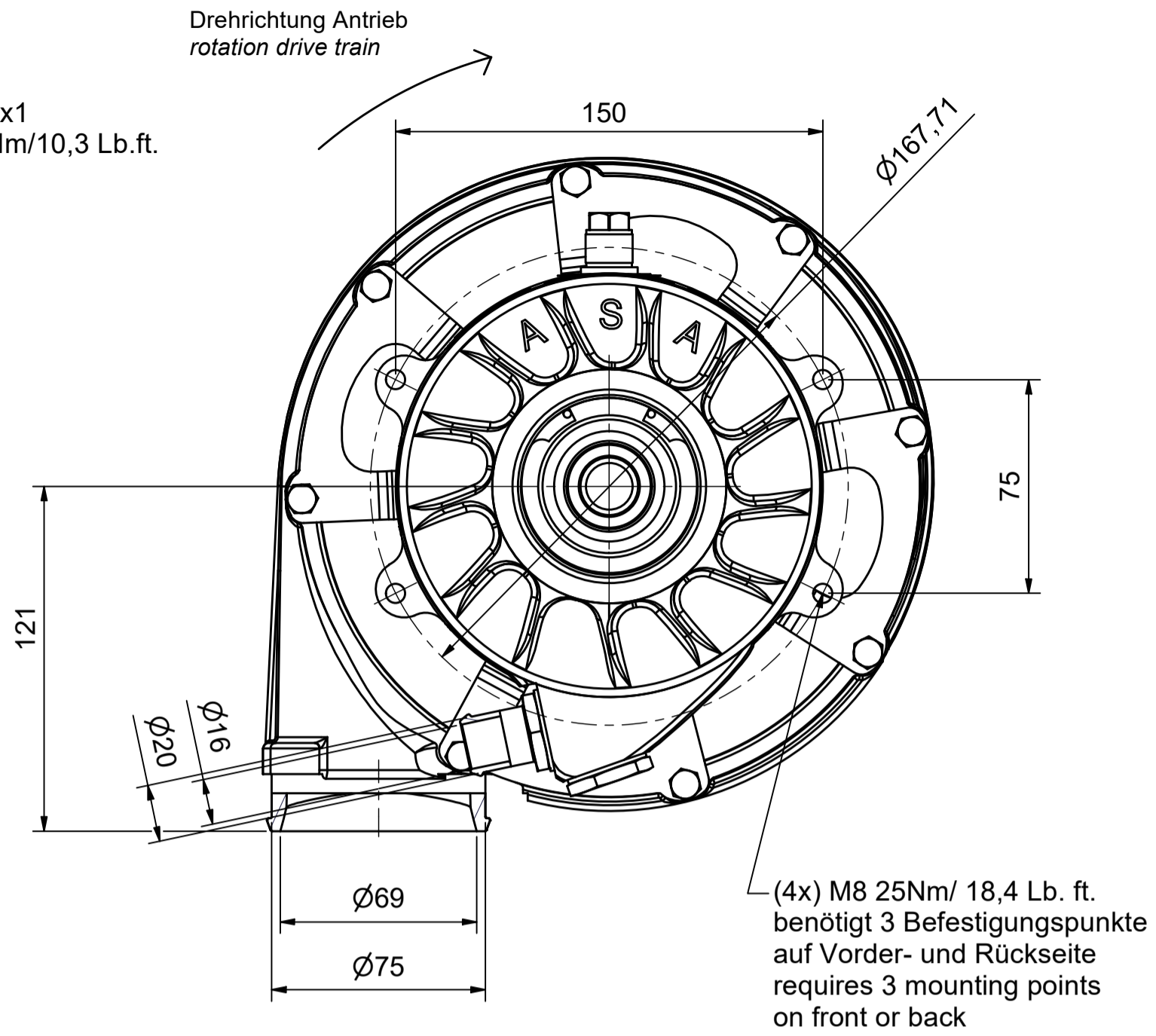
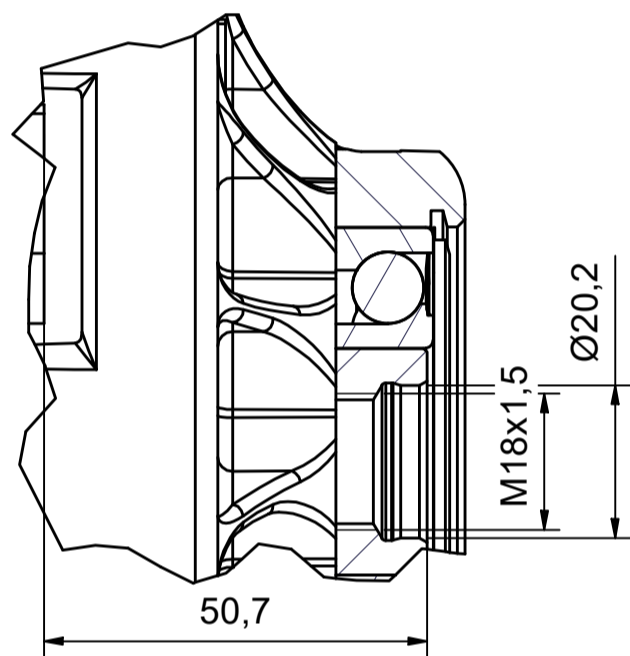


Kompressor T1-520

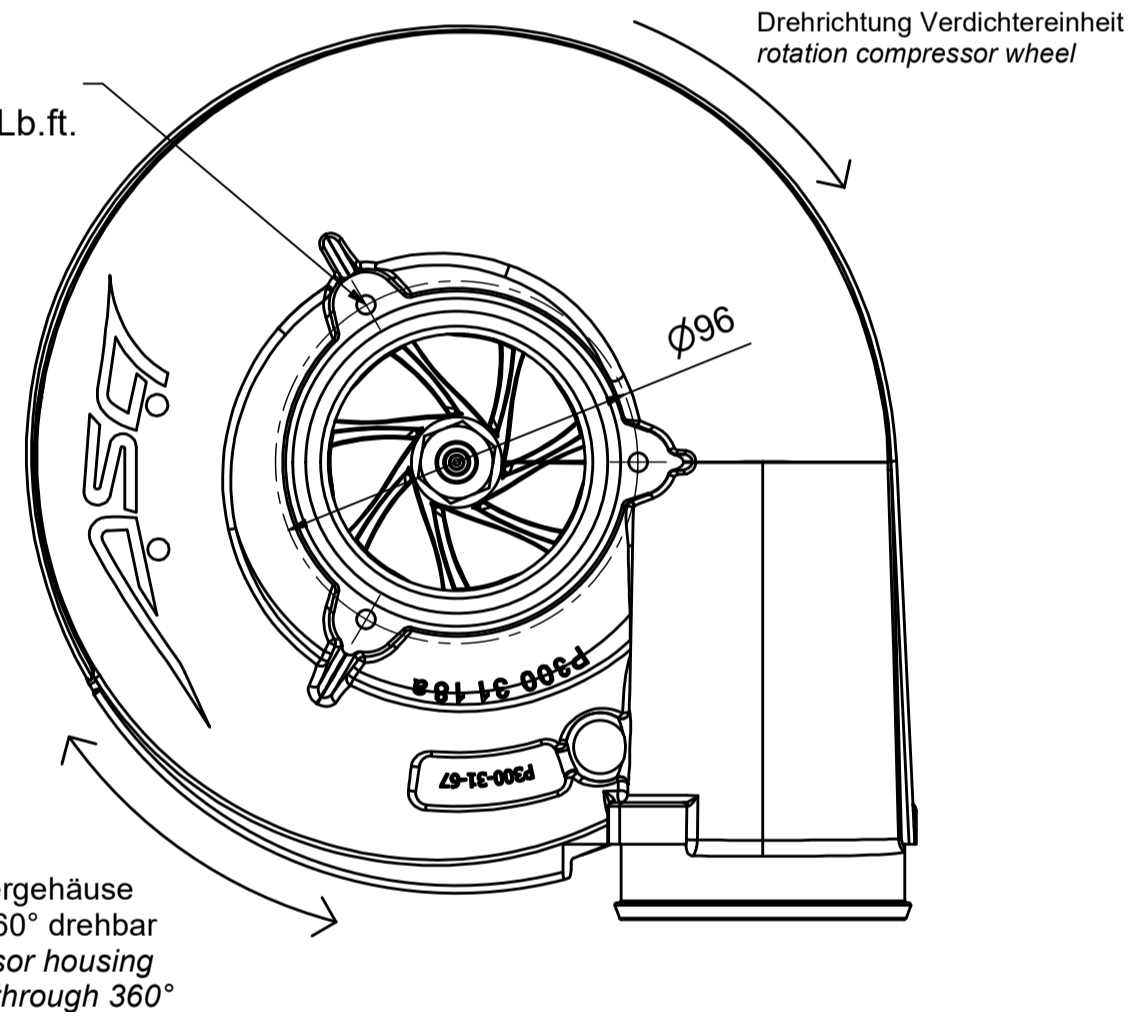
Datenblatt data sheet



A (1:1)
Antrieb / drive



(3x) M6x16
10 Nm/7,4 Lb.ft.



| | |
|--|---------------------------|
| Gewicht ohne Kupplung (without pulley/without clutch) | 5,9 kg |
| Innere Übersetzung: (inner gear ratio) | 1:15 |
| Ölvolumenstrom (übliche Motorenöle): (oil volume flow-usual engine oil) | 1,2-1,6 l/min |
| Min./Max. Öleintrittstemperatur (min./max. oil inlet temperature) | -40°C/105 °C |
| Nenn Drehzahl (rpm level) | 105.000 1/min |
| Luftmasse (air mass) max. T1-520 | 1.900 kg/h |
| Leistungsbereich (power range) | 640 PS |
| Max. Druckverhältnis p2/p1 (max. pressure ratio) | 2.6 |
| Massenträgheitsmoment (mass moment of inertia) | auf Anfrage on request |

